

GD121 PROJECT 2: Tracking/Kerning exercise

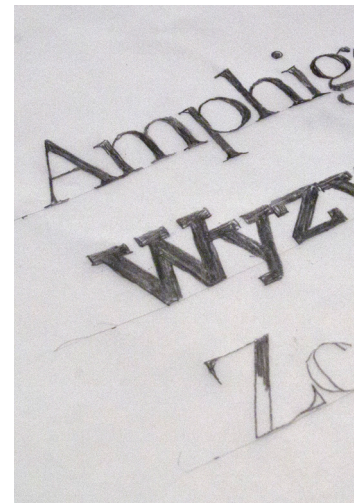
1) USE YOUR T-SQUARE. Draw 4 light parallel baselines on a piece of tracing paper about two inches apart, one for each word.

2) TRACE THE LETTERS. Using those light baselines to keep the letters lined up, carefully trace and fill in the letters of these words *as exactly as you can*, using a .5mm mechanical pencil.

3) TIGHTEN THE TRACKING AND FIX THE KERNING. While you are tracing the words, tighten the overall spacing (tracking) of the letters AND even out the spacing of individual letters (their kerning) by loosening or tightening them. For instance, in the word "Amphigory" below, tighten the overall spacing of the word, but the distance between the p and the h is too large and will have to be tightened more, and the space between the r and the y is too tight, so will have to be loosened. (Other character spaces will have to be adjusted also.)

While you are tracing the letters, look at how the letters are formed, and the differences between each font.

PROJECT DUE: Mon Sept 12



Am phigory

Wyzynski

Zoology

Amphigory